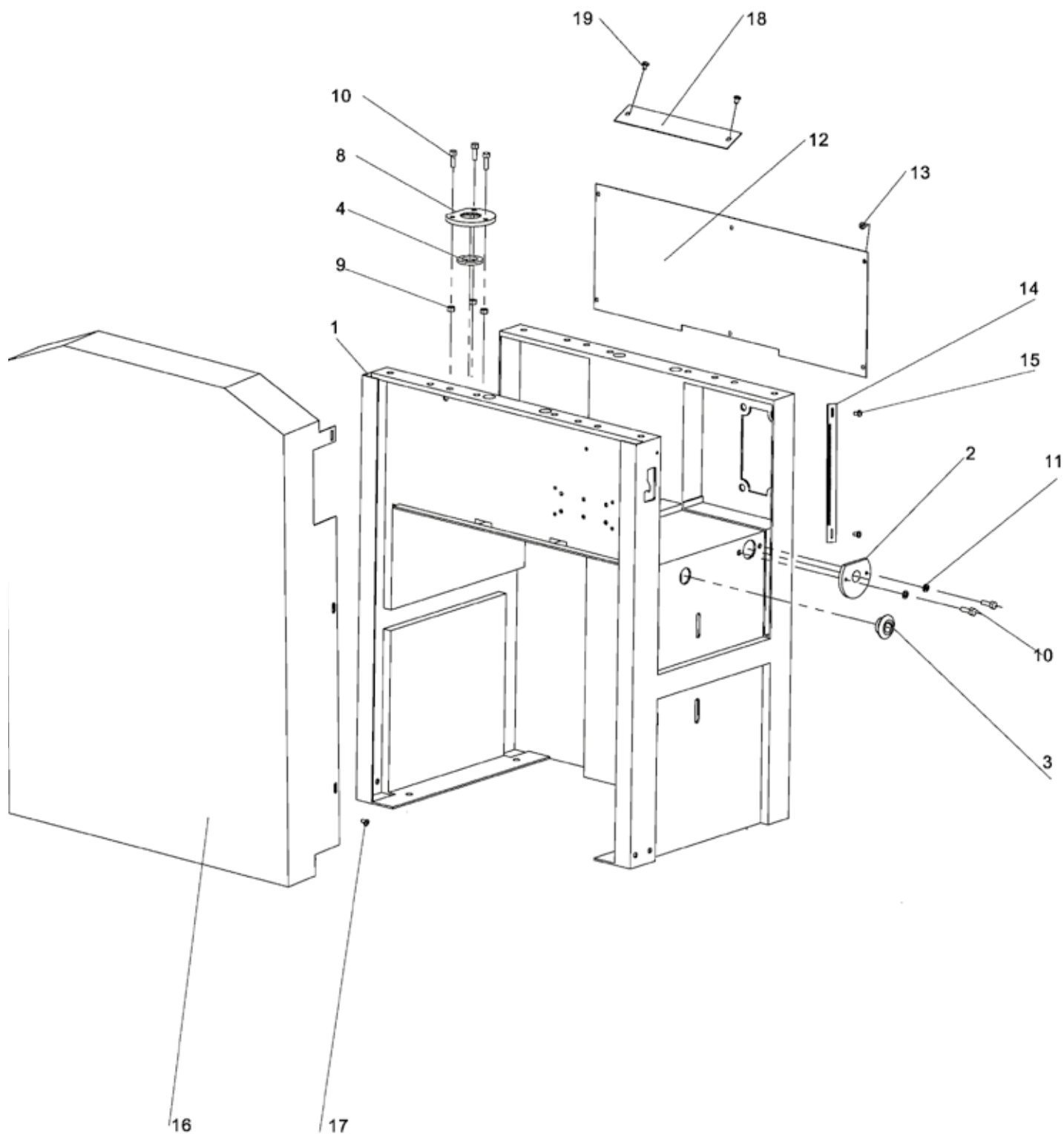


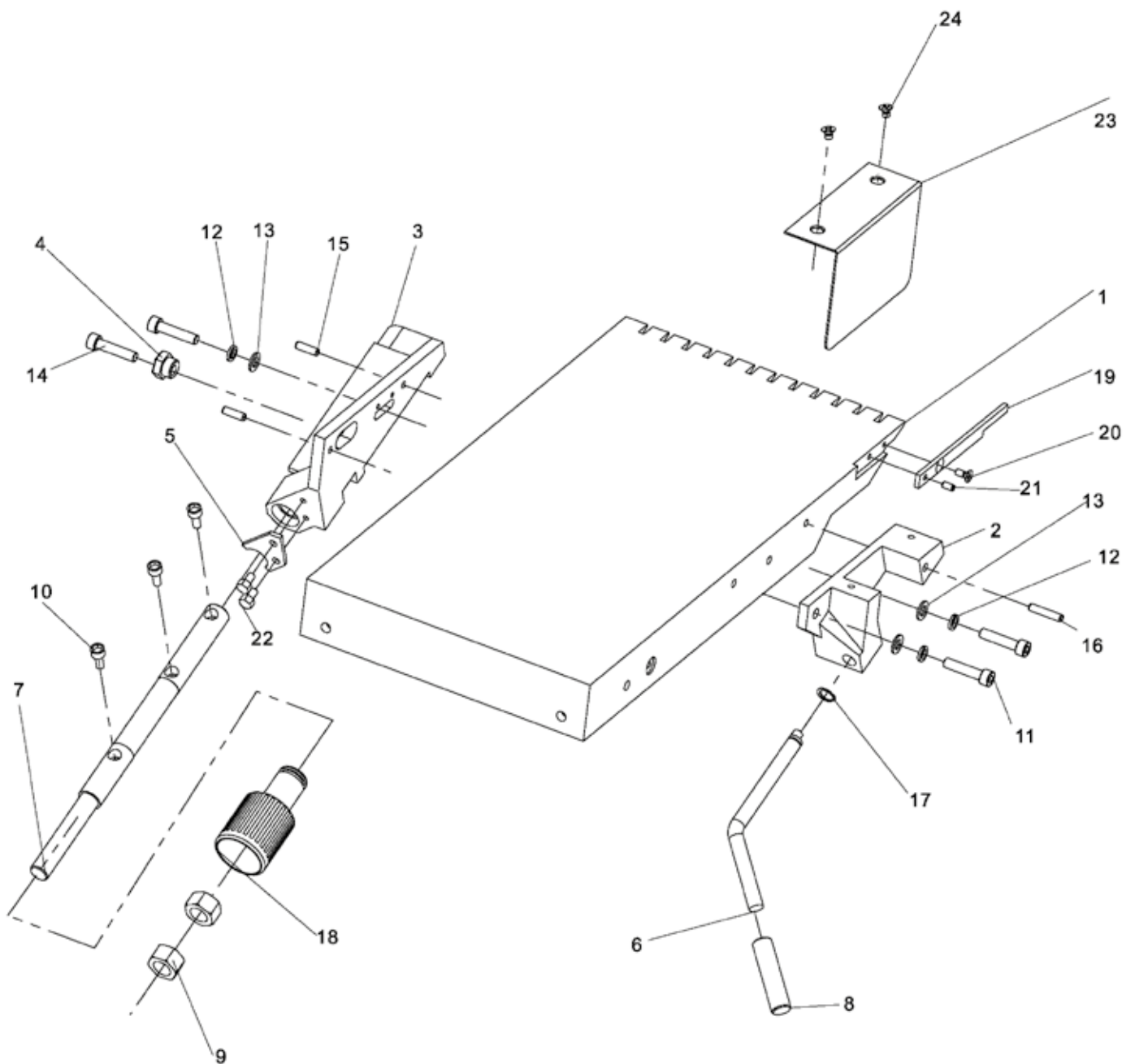
15. Parts Lists & Diagrams



NO.	DESCRIPTION	QUANTITY
1	Main frame	1
2	Shaft seat, thickening table	1
3	Seat, lock lever	1
4	Oil seal	1
8	Seat, bearing	1
9	Hex lock nut	3
10	Hex screw M6 x 16 mm	5
11	Washer 6 mm	2

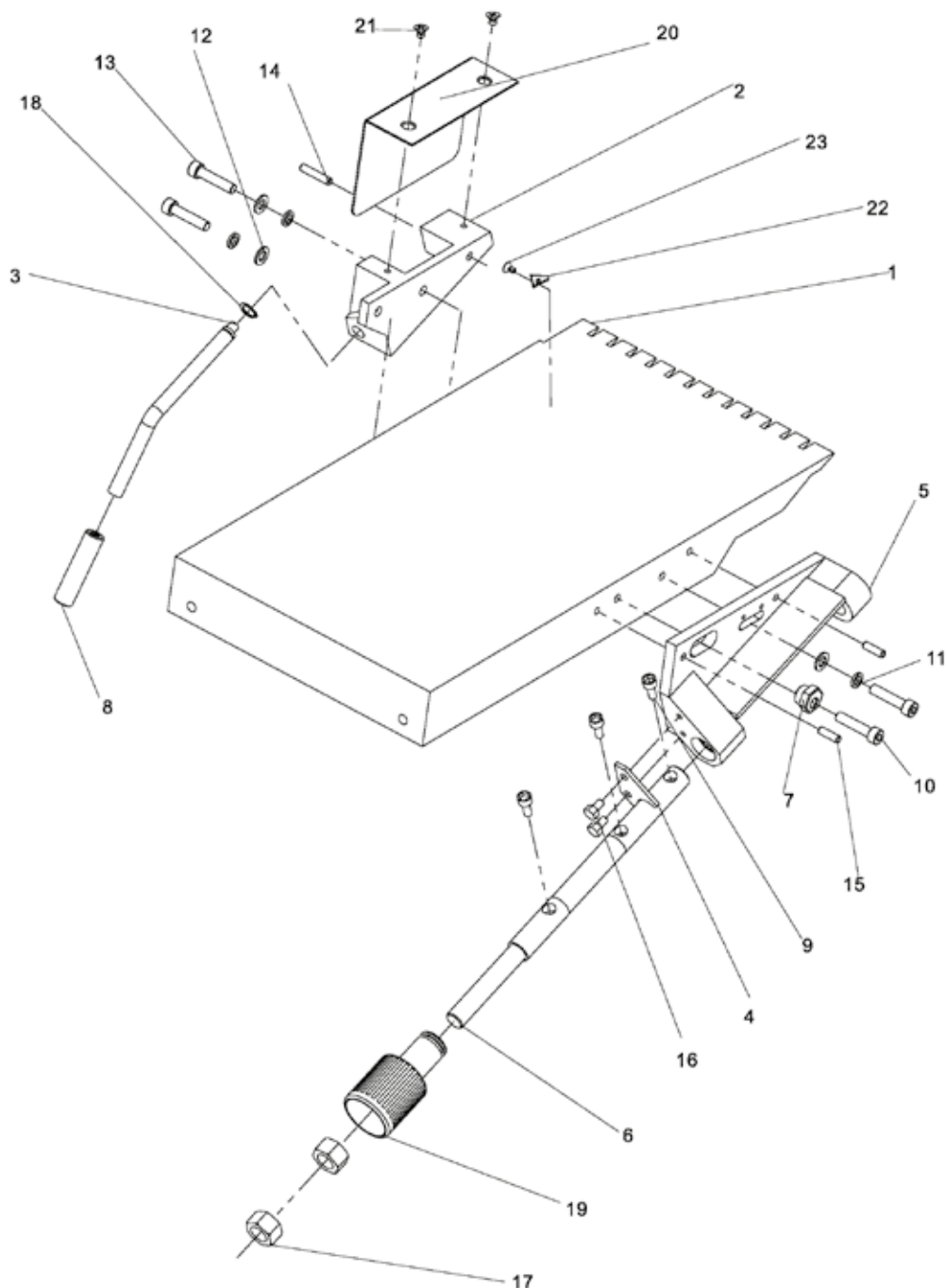
NO.	DESCRIPTION	QUANTITY
12	Inner shield	1
13	Cross sunk head screw M5 x 6 mm	5
14	Scale, thickening height	1
15	Pan head screw M5 x 6 mm	5
16	Gear cover	1
17	Pan head screw M5 x 6 mm	6
18	Cover plate	2
19	Pan head screw M5 x 8 mm	4

15. Parts Lists & Diagrams - cont.



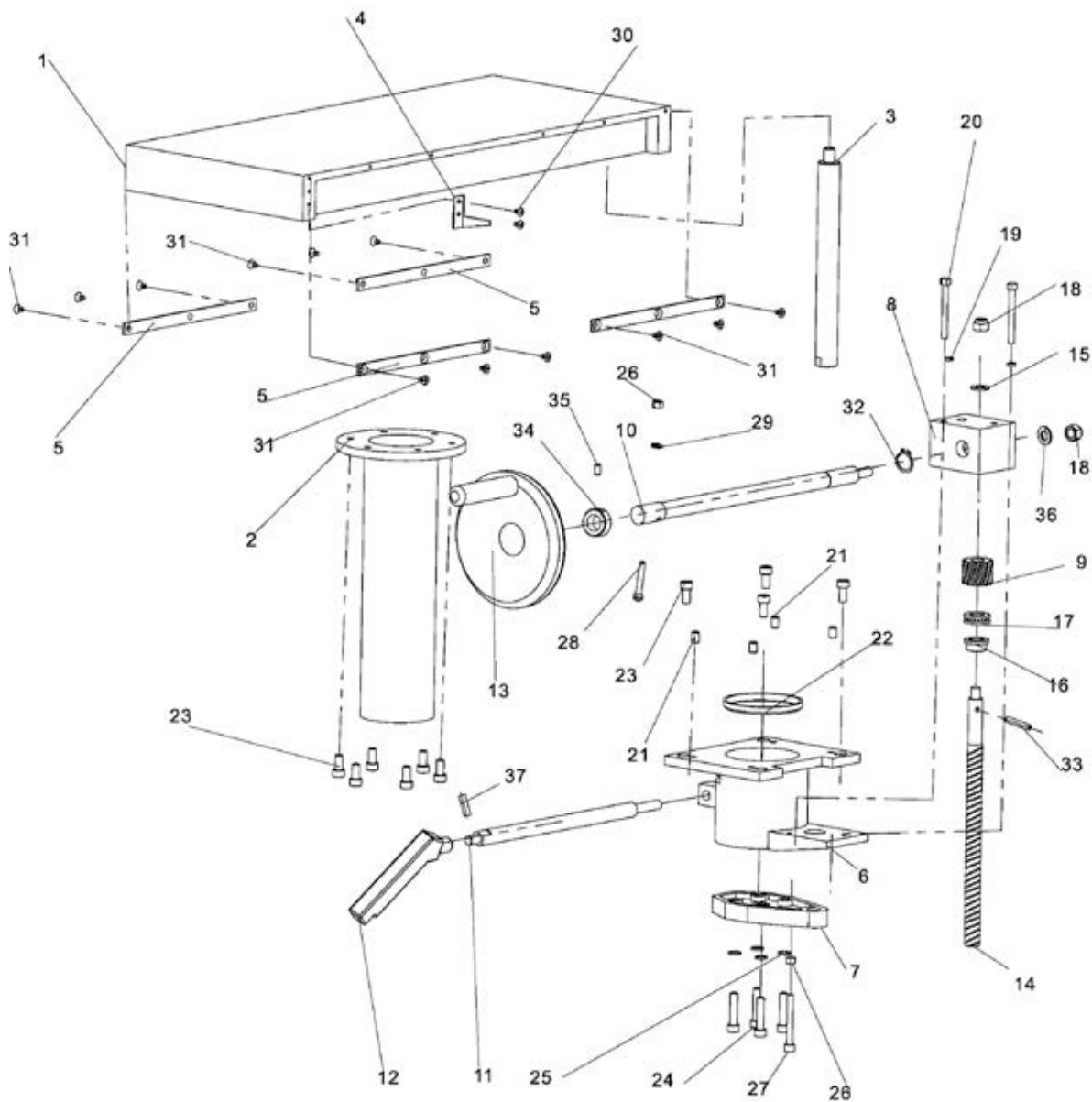
NO.	DESCRIPTION	QUANTITY	NO.	DESCRIPTION	QUANTITY
1	Outfeed table, planer	1	13	Washer 8 mm	3
2	Table lock seat	1	14	Hex screw M8 x 30 mm	2
3	Table swing seat	1	15	Roll pin D6 x 20 mm	2
4	Eccentric seat	1	16	Roll pin D6 x 30 mm	1
5	Fork	1	17	Circle ring 12 mm	1
6	Table lock	1	18	Handle, table swing	1
7	Table swing shaft	1	19	Safe link rod	1
8	Sleeve, table lock	1	20	Cross sunk head screw M5 x 12 mm	1
9	Hex nut M16	2	21	Roll pin 5 x 10 mm	1
10	Hex screw M6 x 20 mm	3	22	Hex head screw M6 x 12 mm	2
11	Hex screw M8 x 25 mm	2	23	Shield plate	1
12	Spring washer 8 mm	3	24	Cross sunk head screw M6 x 8 mm	2

15. Parts Lists & Diagrams - cont.



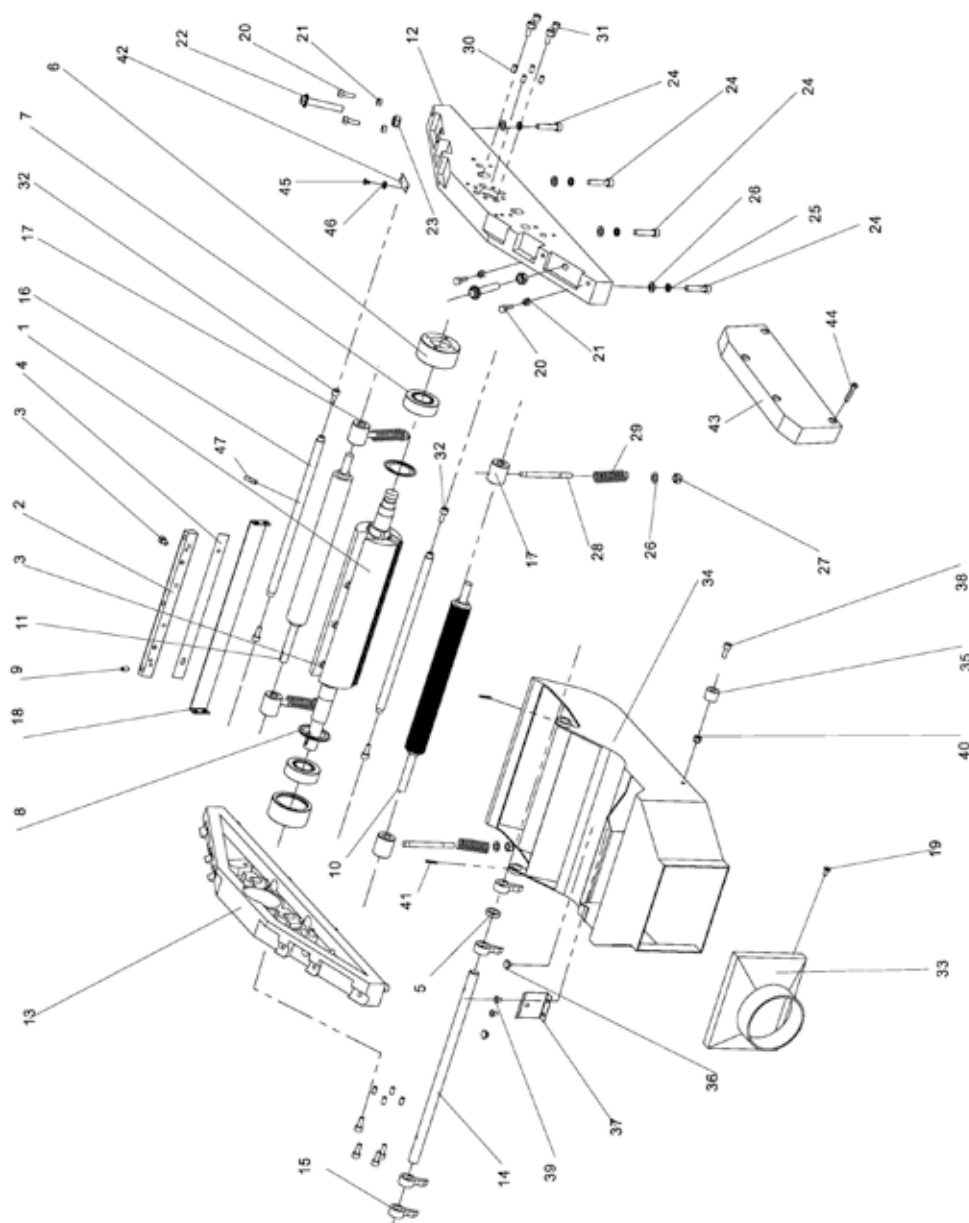
NO.	DESCRIPTION	QUANTITY	NO.	DESCRIPTION	QUANTITY
1	Feed table, planer	1	13	Hex screw M8 x 25 mm	2
2	Table lock seat	1	14	Roll pin D6 x 30 mm	1
3	Table lock	1	15	Roll pin D6 x 20 mm	2
4	Fork	1	16	Hex head screw M6 x 12 mm	2
5	Table swing seat	1	17	Hex nut M16	2
6	Table swing shaft	1	18	Circle ring 12 mm	1
7	Eccentric seat	1	19	Handle, table swing	1
8	Sleeve, table lock	1	20	Shield plate	1
9	Hex screw M6 x 20 mm	3	21	Cross sunk head screw M6 x 8 mm	2
10	Hex screw M8 x 30 mm	2	22	Pointer	1
11	Spring washer 8 mm	3	23	Pan head screw M4 x 8 mm	1
12	Washer 8 mm	3			

15. Parts Lists & Diagrams - cont.



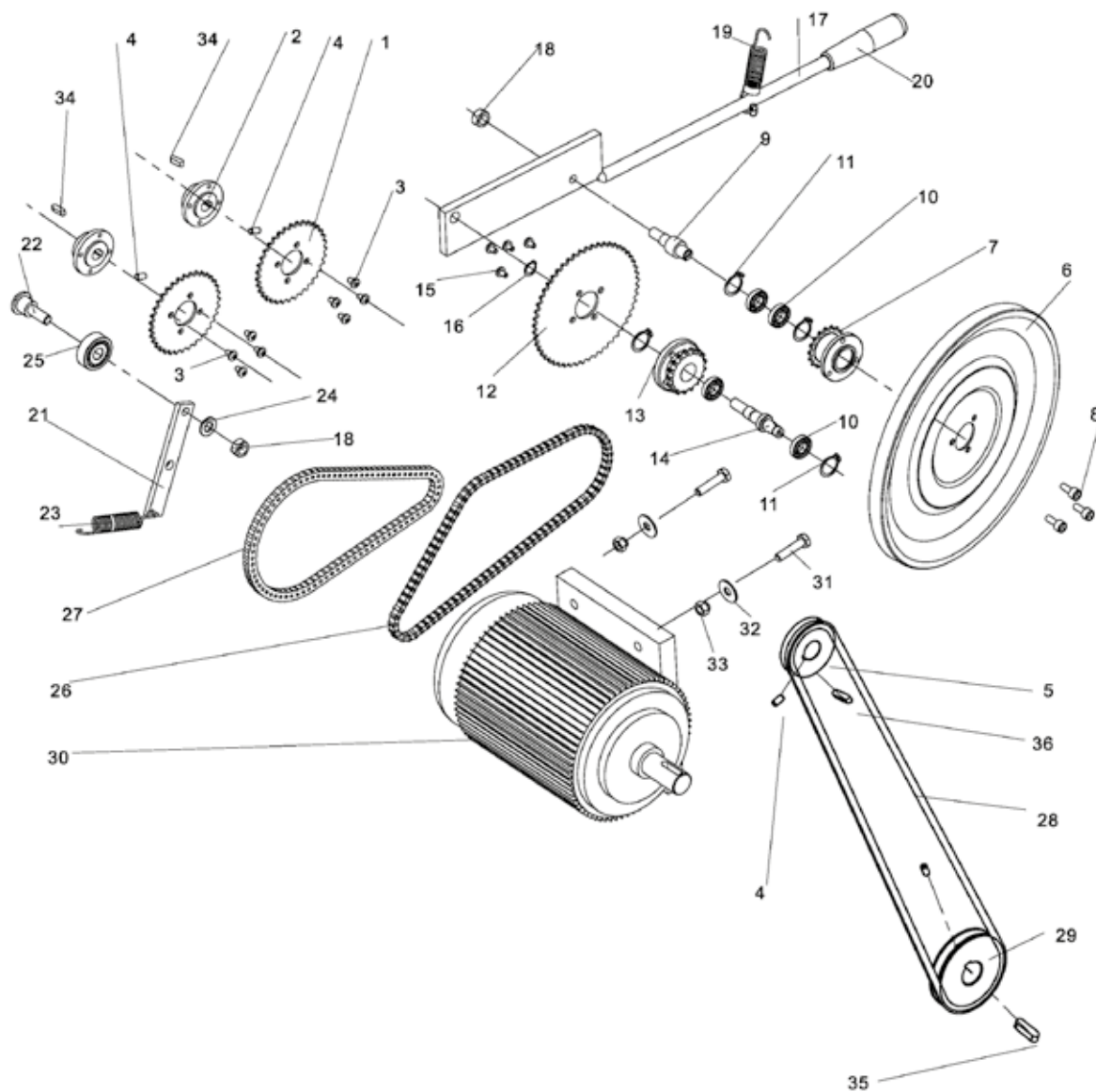
NO.	DESCRIPTION	QUANTITY	NO.	DESCRIPTION	QUANTITY
1	Thickening table	1	20	Hex head screw M6 x 60 mm	2
2	Raise guide rail	1	21	Set screw M8 x 12 mm	4
3	Special guide	1	22	Oil seal	1
4	Height indicator	1	23	Hex screw M8 x 16 mm	10
5	Edge plate	4	24	Hex screw M8 x 35 mm	4
6	Fixed guide rail	1	25	Spring washer 8 mm	4
7	Screw guide	1	26	Hex nut M6	2
8	Raise gear seat	1	27	Hex screw M6 x 55 mm	1
9	Raise gear	1	28	Carriage bolt M6 x 40 mm	1
10	Raise shaft	1	29	Washer 6 mm	1
11	Clamp rod	1	30	Pan head screw M4 x 10 mm	2
12	Clamp lever	1	31	Cross sunk head screw M4 x 8 mm	12
13	Handle wheel, raising	1	32	Circle ring 18 mm	1
14	Rise and fall lead screw	1	33	Roll pin 5 x 10 mm	1
15	Spacer	1	34	Collar	1
16	Spacer	1	35	Set screw M8 x 8 mm	1
17	Thrust bearing 51102	1	36	Washer 10 mm	1
18	Hex lock nut M10	2	37	Roll pin 2.5 x 12 mm	1
19	Spring washer 6 mm	2			

15. Parts Lists & Diagrams - cont.



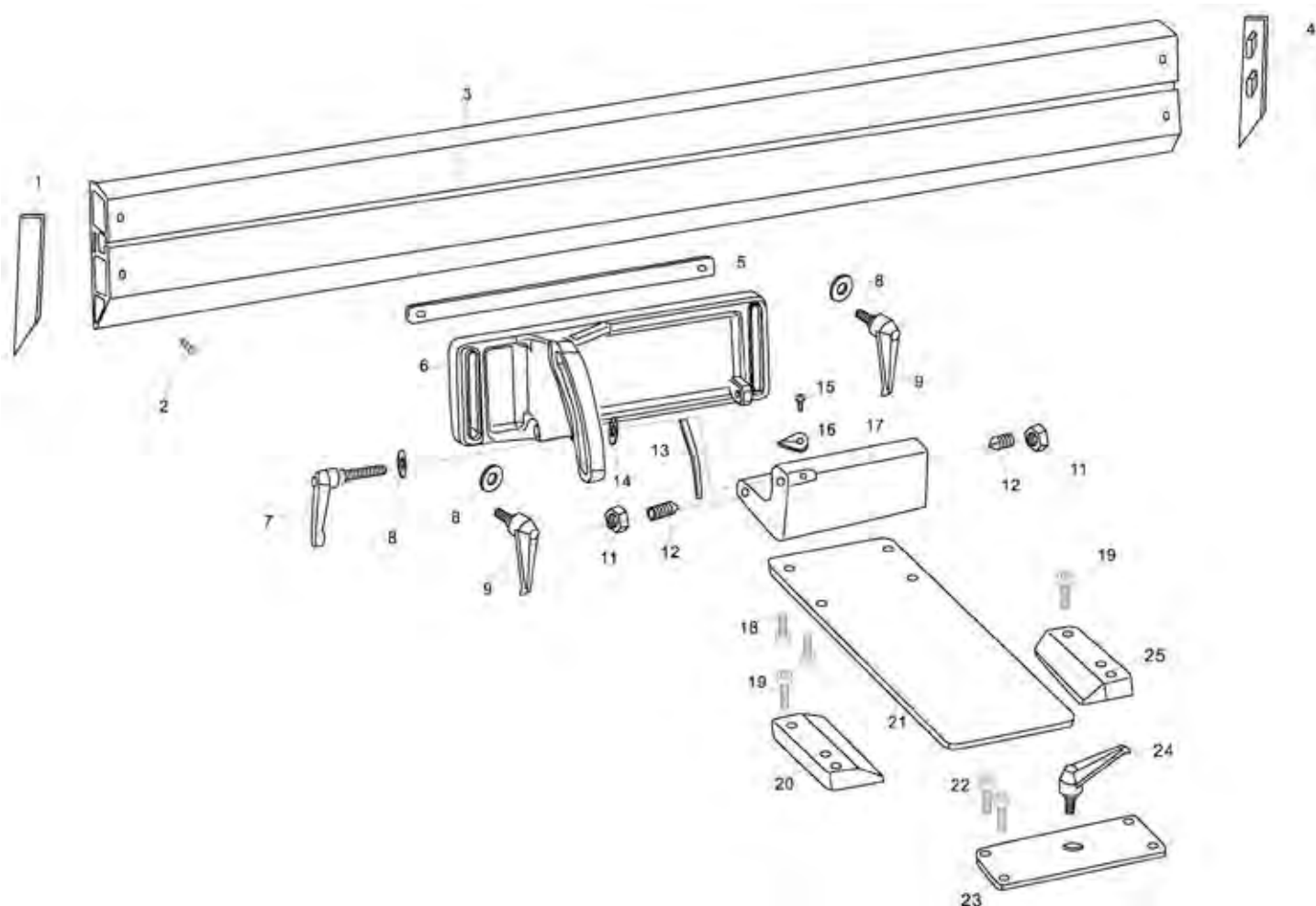
NO.	DESCRIPTION	QUANTITY	NO.	DESCRIPTION	QUANTITY
1	Cutter block	1	20	Hex head screw M6 x 60 mm	2
2	Blade holder	3	21	Set screw M8 x 12 mm	4
3	Hex head screw M6 x 12 mm	12	22	Oil seal	1
4	Blade	3	23	Hex screw M8 x 16 mm	10
5	Spacer	16	24	Hex screw M8 x 35 mm	4
6	Bearing cover	2	25	Spring washer 8 mm	4
7	Bearing 6205	2	26	Hex nut M6	2
8	Circle ring 52 mm	2	27	Hex screw M6 x 55 mm	1
9	Set screw M6 x 12 mm	6	28	Carriage bolt M6 x 40 mm	1
10	In-feed roller	1	29	Washer 6 mm	1
11	Outfeed roller	1	30	Pan head screw M4 x 10 mm	2
12	Bearing house, front	1	31	Cross sunk head screw M4 x 8 mm	12
13	Handle wheel, raising	1	32	Circle ring 18 mm	1
14	Raise guide rod	1	33	Roll pin 5 x 10 mm	1
15	Spacer	1	34	Collar	1
16	Spacer	1	35	Set screw M8 x 8 mm	1
17	Thrust bearing 51102	1	36	Washer 10 mm	1
18	Hex lock nut M10	2	37	Roll pin 2.5 x 12 mm	1
19	Spring washer 6 mm	2			

15. Parts Lists & Diagrams - cont.



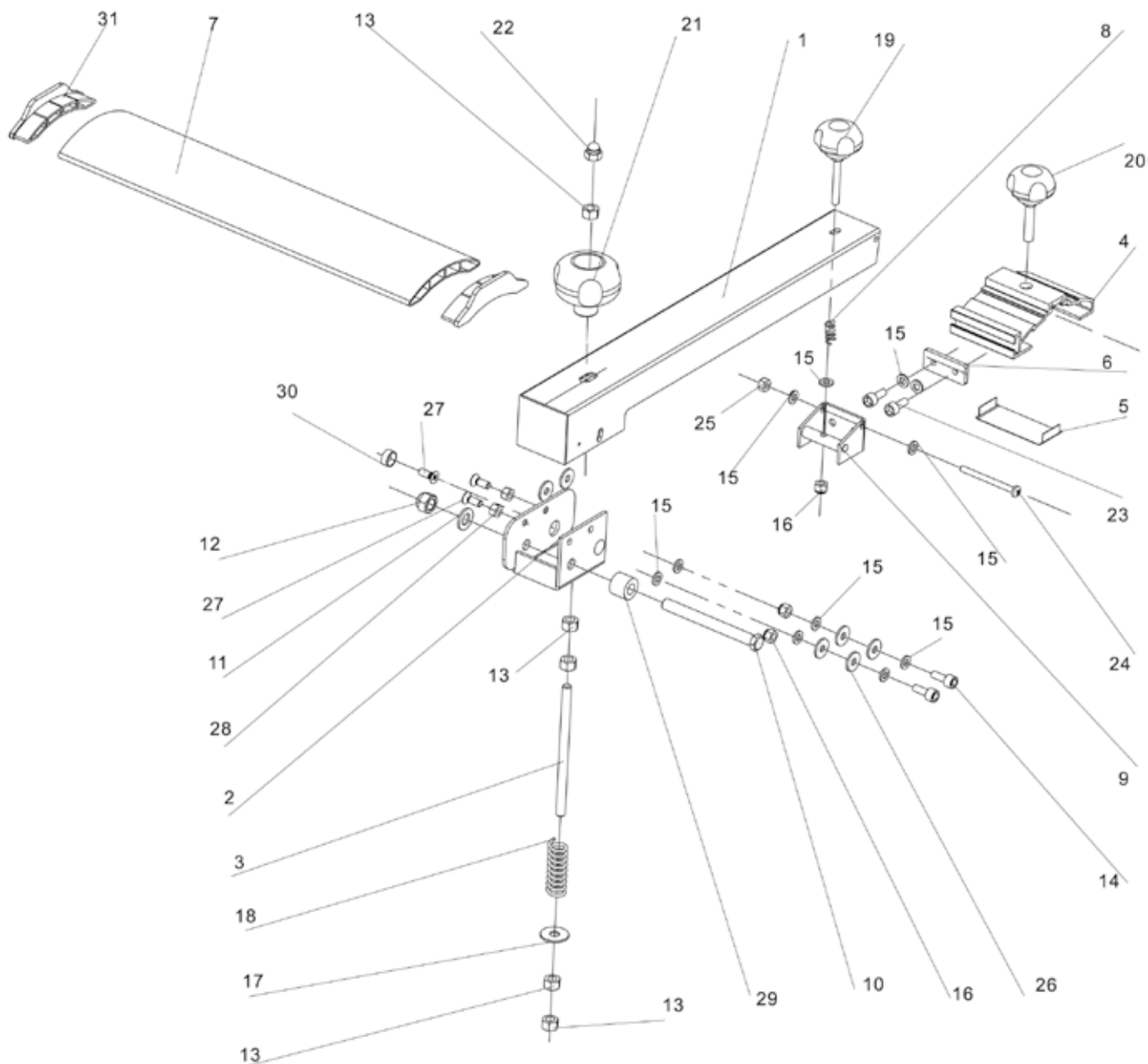
NO.	DESCRIPTION	QUANTITY	NO.	DESCRIPTION	QUANTITY
1	Sprocket A	2	19	Spring	1
2	Flange	2	20	Handle, friction lever	1
3	Pan head screw M5 x 8 mm	8	21	Tension plate	1
4	Set screw M6 x 6 mm	4	22	Tension rod	1
5	Shaft pulley	1	23	Spring	1
6	Friction wheel	1	24	Washer 10mm	1
7	Sprocket B	1	25	Bearing 6303	1
8	Hex screw M6 x 12 mm	3	26	Feeding chain	1
9	Shaft, friction wheel	1	27	Chain	1
10	Bearing 61901	4	28	Belt XPZ1250	1
11	Circle ring 24 mm	4	29	Motor pulley	1
12	Sprocket C	1	30	Motor	1
13	Sprocket D	1	31	Hex head screw w.flange M8 x 25 mm	4
14	Shaft, sprocket	1	32	Special flat washer 8 mm	4
15	Pan head screw M6 x 8 mm	4	33	Cap nut M8	4
16	Circle ring 12 mm	1	34	Flat key 5 x 5 x 16 mm	2
17	Lever, friction wheel	1	35	Flat key 8 x 7 x 28 mm	1
18	Hex nut M10	2	36	Flat key 6 x 6 x 16 mm	1

15. Parts Lists & Diagrams - cont.



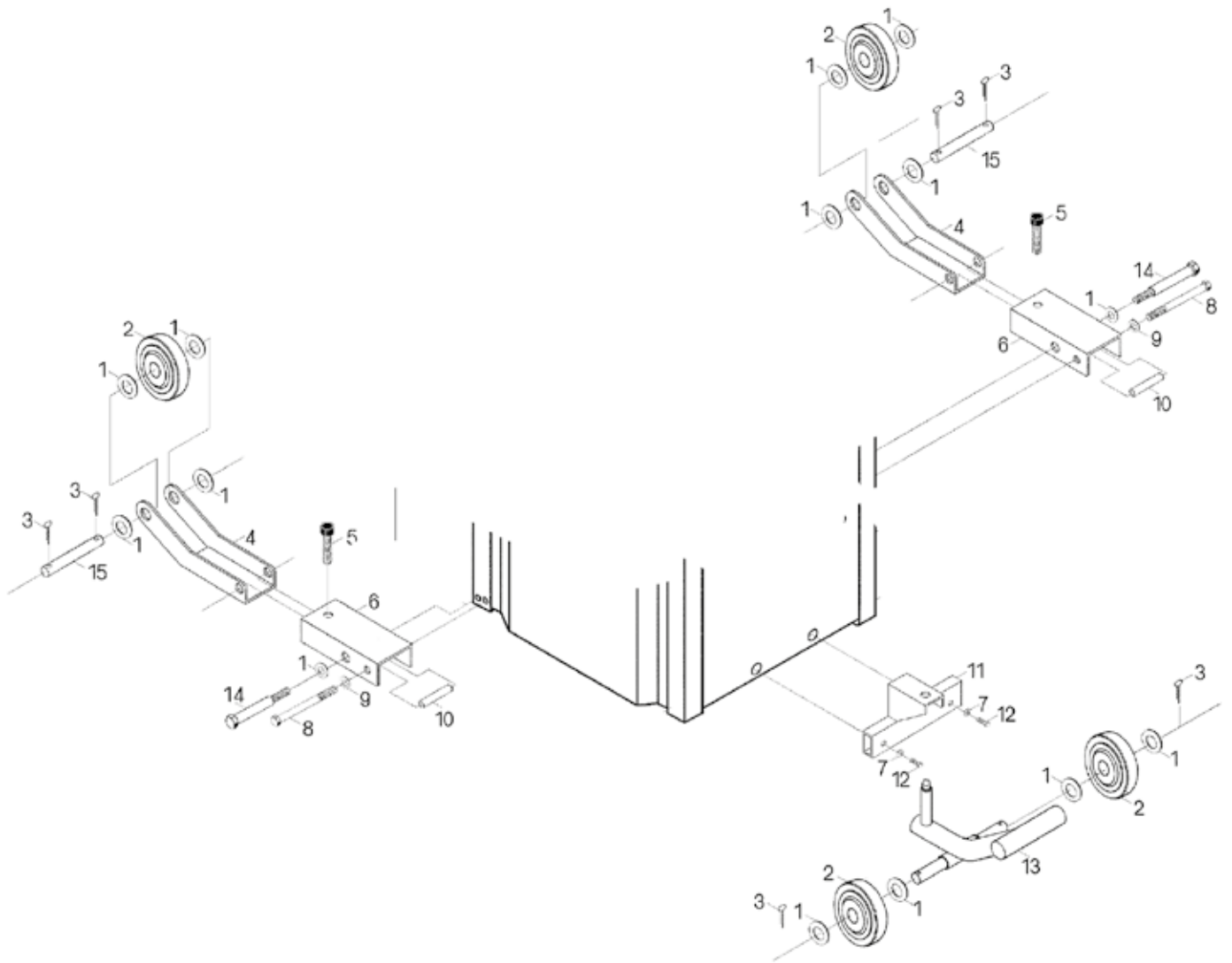
NO.	DESCRIPTION	QUANTITY
1	End cap (right)	1
2	Screw	1
3	Fence extrusion	1
4	End cap (Left)	1
5	Fence locating strip	1
6	Fence bracket	1
7	Ratchet handle M8	1
8	Washer M8	3
9	Ratchet handle M8	1
11	Locking nut 10 mm	1
12	Blind set screws 10 mm	2
13	Scale	1
14	Spacer	1
15	Screw	1
16	Pointer	1
17	Fence block	1
18	Hex bolt M6	2
19	Hex bolt M6	1
20	Aluminium fence seat	1
21	Fence plate	1
22	Hex bolts	2
23	Fence lock plate (left)	1
24	Ratchet Handle M8	1
25	Fence lock plate (right)	1

15. Parts Lists & Diagrams - cont.



NO.	DESCRIPTION	QUANTITY	NO.	DESCRIPTION	QUANTITY
1	Bridge guard arm	1	17	Flat washer 8 mm	1
2	Swivel base, guard	1	18	Spring	1
3	Rod, spring	1	19	Star-type screw M6 x 35 mm	1
4	Joint, bridge guard	1	20	Star-type screw M8 x 35 mm	1
5	Insert, guard	1	21	Star-type nut	1
6	Bolt guide	1	22	Cap nut M8	1
7	Protective guard plate	1	23	Hex screw M6 x 10 mm	2
8	Spring	1	24	pan head screw M5 x 65 mm	1
9	Knot	1	25	Hex lock nut M5	1
10	Hex head screw M10 x 100 mm	1	26	Spacer	6
11	Washer 10 mm	1	27	Cross sunk head screw M6 x 16 mm	3
12	Hex lock nut M10	1	28	Hex lock nut M6	2
13	Hex nut M8	5	29	Spacer	1
14	Hex screw M6 x 20 mm	2	30	Spacer	1
15	Washer 6 mm	11	31	End cap, bridge guard	2
16	Hex lock nut M6	5			

15. Parts Lists & Diagrams - cont.



NO.	DESCRIPTION
1	Washer 16 mm
2	Castor
3	Roll pin 4 x 30 mm
4	Bracket castor
5	Hex screw M12 x 50 mm
6	Bracket castor
7	Washer 10 mm
8	Hex screw M12 x 80 mm
9	Washer 12 mm
10	Bushing bracket
11	Support, pull rod
12	Hex screw M10 x 55 mm
12	Pull rod
14	Bolt, bracket
15	Shaft, castor