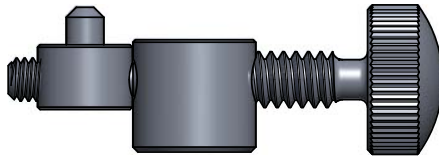


This plane is a scaled-down version of the Veritas® Small Bevel-Up Smooth Plane. The body is investment cast stainless steel that has been accurately machined and surface ground. The knob and tote are bubinga. The plane features a functional Norris-style adjuster made from stainless steel.

### Blade Adjustment

Should the blade adjustment mechanism ever get out of the proper configuration, reposition the parts as shown below.



### Blade Sharpening

The 0.060" thick by 0.61" wide A2 tool steel blade has the bevel ground at a 25° angle.

*Note: A corrosion-inhibiting paperboard chip is included in the case. It will provide continuous corrosion protection for up to two years.*

### Accessories

**05P82.23** Replacement Blade

---

veritas® Tools Inc.

814 Proctor Avenue      1090 Morrison Drive  
Ogdensburg NY 13669-2205      Ottawa ON K2H 1C2  
United States      Canada

customerservice@veritastools.com  
[www.veritastools.com](http://www.veritastools.com)