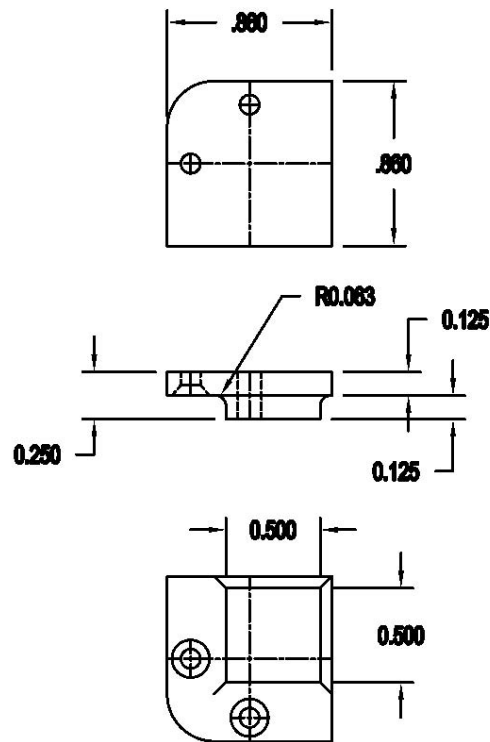


HD 702

INSTALL WITH
TJ 702 TEMPLATE



Questions- Call before mortising 212-337-8510

BRUSSO®
American Made
PRECISION HARDWARE

©1983-2012 Brusso Hardware LLC
67-69 Greylock Avenue
Belleville, NJ 07109
T 212-337-8510 F 212-337-9840

Product: HD 702 BOX FEET

Revision: 2

Component: BOX FEET

Material: BRASS

File Name:
HD 702
BOX FEET

Catalog No: HD 702

Drawn By: KA

Checked By: RB

Tolerances unless otherwise specified: Machined features fraction $\pm 1/64$
Decimal $.xxx \pm .005$, Angular ± 1 Degree, Hole Diameter $+.003/-0.002$

Scale: NONE

Date: 2/8/13

Date: 2/20/13

Sheet: 1 of 3