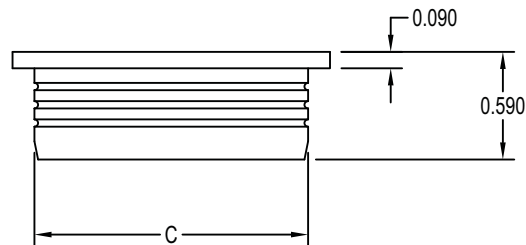
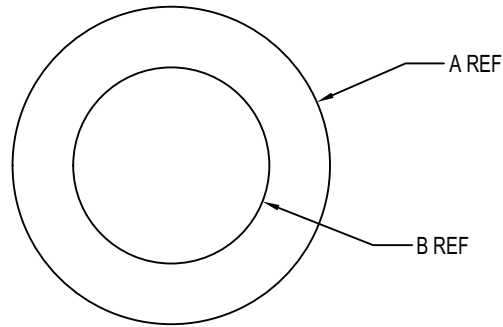


CP-XXX



CP Part Family				
	CP-125	CP-150	CP-175	CP-200
A	1.24	1.49	1.74	1.99
B	0.74	0.92	1.07	1.27
C	1.00	1.25	1.50	1.75

Questions- Call before mortising 212-337-8510

BRUSSO®
American Made
PRECISION HARDWARE

©1983-2012 Brusso Hardware LLC
 67-69 Greylock Avenue
 Belleville, NJ 07109
 T 212-337-8510 F 212-337-9840

Product: CP-XXX

Revision: 1

Component:

Material: BRASS

File Name:
 CP-XXX
 PART FAMILY

Catalog No: CP-XXX

Drawn By: KB

Checked By: EJ

Sheet: 1 of 3

Tolerances unless otherwise specified: Machined features fraction ± 1/64
 Decimal .xxx ± .005, Angular ± 1 Degree, Hole Diameter +.003/- .002

Scale: NONE

Date: 6/19/15

Date: 8/19/15